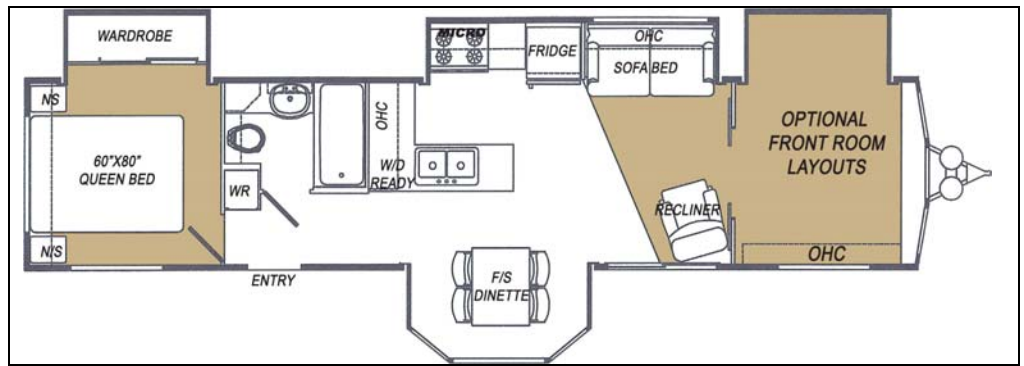


GLENDALE RV

382PA

**PARK MODEL
2009 MODEL YEAR**

By Glendale RV
www.glendalerv.com



OVERALL LENGTH	LENGTH WITH HITCH REMOVED	MAIN BODY WIDTH	INTERIOR WIDTH	INTERIOR HEIGHT	OVERALL HEIGHT	OVERALL SETUP WIDTH/SLIDE OUTS OPEN
41'-11"	39'-5 1/2"	102"	94"	94"	12'-4"	14'-2"

CONSTRUCTION

SIDEWALLS: 2"x3" sidewall framing. Thick fiberglass batt insulation blankets the sidewall structure. All framework is positioned at 16" O.C construction standards. Aluminum exterior siding (.025" gauge) includes baked enamel smooth finish with built in U.V shielding to provide years of high luster appearance and "easy clean" finish surface.

ROOF: Quiet, durable, and seamless rubber roof membrane is bonded to 3/8 " spruce plywood. Full 5 1/2" tapered crown roof structure provides outstanding strength and superior water drainage. Tapered bow truss framing. Thick fiberglass batt insulation.

FLOOR: 5/8" decking screwed and glued to 2"x4" main floor frame. Seamless Darco polyethylene moisture barrier between chassis and floor. Seam guard under vinyl floor coverings.

CHASSIS: 8" I-beam construction. Specially formulated chassis undercoating provides many years of corrosion and paint protection.

SLIDE OUT SPECIFICATIONS: "No step" flush floor design between main body and slide outs. "Maintenance free" slide out system self supports.

INTERIOR CABINET DOORS: Raised panel Ash colored style cabinet doors with antique brass hardware. T&G inter-locking cabinet door miters. Overhead arched style raised cabinet doors/Sofa slideout and bedroom area. Many cabinets feature center shelves for stacking convenience. "Easy Glide" metal roller system on all drawers.

WINDOWS: "Awning Style" window openings provide "protected ventilation" in rainy weather. Opening the vent creates an awning, so the window can be opened for fresh air while channeling water outward from the vehicle walls. Screens are removable. Day and night shades.

APPLIANCES

REFRIGERATOR: Large double door residential style GE 18.2 cubic foot capacity.

RANGE: Premiere 30" free standing residential style range , white finish, white glass oven door

FURNACE: Hydro-Flame auto-ignition 40,000 BTU ducted in floor heat system.

MICROWAVE OVEN: 30" GE microwave includes turntable, programmable, and built in range hood vent.

AIR CONDITIONER: Dometic 15,000 BTU thermal insulated ducted in ceiling cool air system.

ENTERTAINMENT

STEREO: DVD/Tuner with 2 Satellite speakers and sub woofer.* **FRONT DEN ONLY**

TV HOOKUP: Coax cable hookup in bedroom and living area

TELEPHONE JACK: 3 Std equip.

SATELLITE HOOK UP: Park model is pre-wired for quick dish connection

PLUMBING

Traveler Lite foot pedal china toilet with hand sprayer. Large white double sink in kitchen (includes cover), with single lever white faucet and sprayer. Bath vanity white china sink with single lever antique brass faucet.

WATER HEATER: Atwood fast recovery 10 gal. LP/Electric operation.

HOLDING TANK CAPACITY:

Sewage Tank: 49 gal

ELECTRICAL

Exterior courtesy light and switch at patio door.

Exterior and interior G.F.I circuits

HOOKUP: 30 Amp

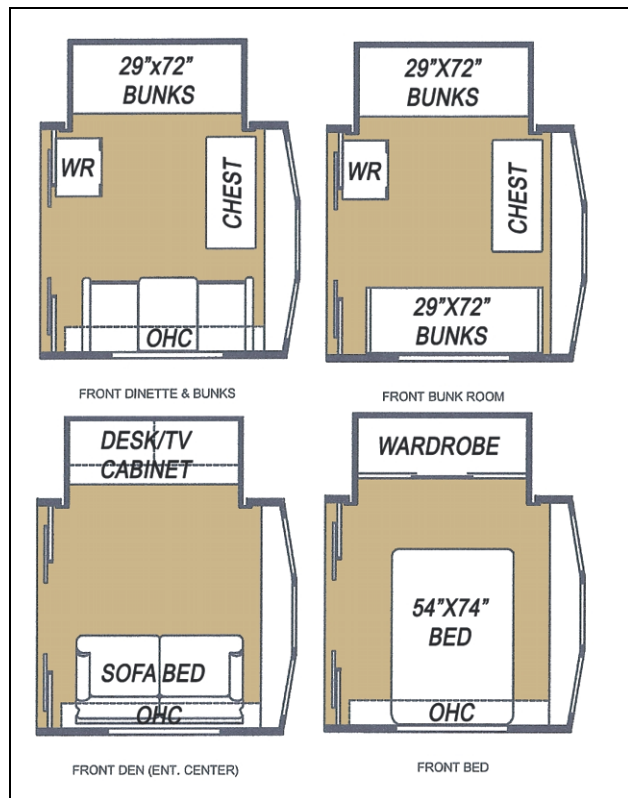
OTHER STANDARD FEATURES

Flush floors between slide outs and main floor of park model, wire rack wardrobe shelving, 110V lighting, brushed nickel hardware, plush carpeting with premium under pad in living room and bedroom, detachable hitch assembly, sliding wardrobe doors, 2 x 30lb. Ceiling trim beech colored crown molding, Propane bottles, recliner, day/night shades, 60"x80" orthopedic quality coil inner spring queen bed, sofa bed.

OPTIONAL EQUIPMENT

Electric fireplace Beech wood color mantle (Front Den only), Natural Oak Flooring, TV antenna with booster, house type toilet, ceiling fan, glass shower doors with antique brass framing, central vacuum, 22' A&E Pewter/White Awning with center rafter, washer dryer ready in kitchen area

OPTIONAL FRONT ROOM LAYOUTS



* All specifications subject to change without notice or obligation