

Titanium

GLENDALER V

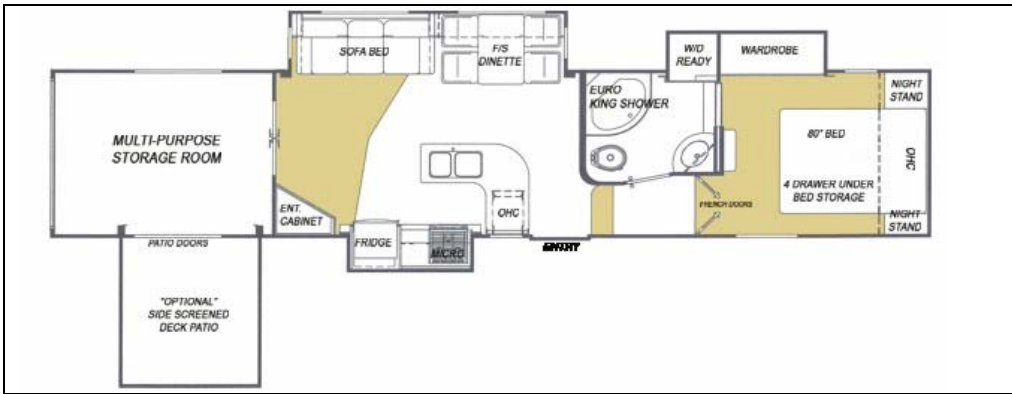
36E41MPRVSA

“Triple Axle” Multi-Purpose Recreational Vehicle

2008 MODEL YEAR

FIFTH WHEEL

All specifications subject to change without obligation 08/29/2007



OVERALL LENGTH	LENGTH-PIN TO BUMPER	G.V.W.R	DRY PIN WEIGHT	DRYWEIGHT	OVERALL HEIGHT	MAIN BODY WIDTH
42'-2"	36'-11"	15,432 lbs.	2,950 lbs.	12,676 lbs.	12'-8"	96"

CONSTRUCTION

SIDEWALLS: Vacuum bonded smooth *High Gloss* fiberglass siding. 1 1/2" light weight aluminum perimeter sidewall framing, and 1 1/2" rigid foam insulation. R9 Insulation value.

ROOF: Seamless rubber roof membrane is bonded to 3/8" plywood decking. Full 4 1/2" tapered metal truss framing. Thick fiberglass batt insulation, R14 Insulation value.

FLOOR: Laminated beam floor structure includes 3" foam insulation panel bonded between plywood panels and perimeter framing. *Darco* polyethylene moisture barrier between chassis underbelly. R16 Insulation value.

CHASSIS: 11" combination Z channel/steel tube frame construction, 3" heavy duty axle assemblies, MorRyde RE Suspension system, Goodyear ST225/75R15 D radial tires, venting wheel rims, hydraulic disc brakes, under slung spare tire and rim, snap release pins on powered front landing gear, power landing gear includes a safety shut off switch, 2 stabilizer jacks, 72 degree adjustable pin box.

SLIDEOUT SPECIFICATIONS: Low maintenance powerful rack and gear 12V direct drive motor system, flush floor design, manual system override.

INTERIOR CABINET DOORS: Raised panel & arch style beech cabinet doors. Easy-Glide metal roller system on all drawers.

WINDOWS: **Radius corner deep tint Thermopane windows.**

ENTRANCE DOOR: 30" wide radius corner combination entrance door with screen and deadbolt lock, easy fold-away 24" triple rise entry steps, fold away assist handle on entry door, porch light.

APPLIANCES

REFRIGERATOR: **Dometic 9 cubic ft double door, 2-way gas/110v.**

RANGE: Wedgewood High Output 21" 3 burner, piezo ignitor.

FURNACE: *Atwood* 2-stage Excalibur furnace 40,000 BTU ducted in floor heat system.

MICROWAVE OVEN: **Dometic 30" 1.7 cubic ft with turntable and built-in range hood, light and exhaust fan.**

AIR CONDITIONER: *Dometic* Briskair 13,500 BTU thermal insulated ducted in ceiling cool air system.

ENTERTAINMENT

STEREO: DVD/CD Tuner 5 speaker surround sound

TV ANTENNA: *Winegard* RV antenna with booster

TV HOOKUP: Coax cable hookup in bedroom and living area.

TELEPHONE JACK: Standard equipment.

SATELLITE HOOKUP: Pre-wired for quick dish connection to the RV.

AWNING

A&E 20' AWNING: Pewter/White

Awning features patented rugged steel roller tube and heavy duty torsion spring 8' extension.

PLUMBING & ELECTRICAL

Sealand Traveler Lite foot pedal flush china toilet with hand spray, large seated shower and surround, folding shower door, single lever brushed brass faucet in kitchen with telescopic sprayer, all-in-one solid surface counter and deep double sinks, brushed brass single lever tap in bathroom, water heater by-pass kit, water filtration system located under kitchen sink.

HOLDING TANKS: Holding tanks are enclosed, insulated and heated. Garden style non-freeze drain tap on fresh water tank, sewage tank flush system.

HOLDING TANK CAPACITIES:

FRESH: 63 gallon **GREY:** 49 gallon **SEWAGE:** 49 gallon

ELECTRICAL CONVERTER: Progressive Dynamics 9200 series converter with built in Charge Wizard.

HOOKUP: 50 AMP

STANDARD FEATURES

Free standing dinette, sofa bed, 60"x80" queen bed, DVD / CD 5.1 surround sound system, Atwood XT water heater, premium exterior graphics package, Nev-R Lube axle hubs, 400 watt power inverter, solid surface kitchen countertop with deep double molded sinks, porcelain toilet, Day/Night shades, bathroom skylight above shower area, Excalibur whisper quiet 2-stage furnace, 13,500 BTU ducted air conditioning, A&E Awning, attic vents, BBQ quick connect, beech-colored base board and ceiling trim, bullet style directional reading lights, satellite dish hookup, 12v power boosted TV antenna, phone jack, cable hookup, rear stabilizer jacks, roof ladder, black tank flush system, exterior shower, spare tire & rim, 12V re-chargeable flashlight, fold-away entry assist handle, wide track easy fold triple entry steps, cartridge style water filter system, single lever kitchen faucet with hand held rinse attachment, dual powered landing gear.

OPTIONAL EQUIPMENT

Thermopane windows, triple axle aluminum rims, exterior security lights, 10 cu ft refrigerator, natural oak laminate flooring in living & kitchen area, dual exterior security lights, fluorescent lighting, electric fireplace, side screened patio deck, **washer dryer ready**, rear retractable screen, basic rough-in generator ready (LP/Electrical lines only) generator prep (box & venting), slideout awning topper, 30" convection microwave, **30" microwave oven with built-in range hood light and exhaust fan, 9 cubic ft refrigerator, 20" flat screen stereo TV in bedroom, Video command center, 32" LCD TV.**

"TOUR EDITION" UPGRADE PACKAGE

Hydraulic disc brakes, MorRyde LRE Suspension, triple axles, premium ultra smooth high gloss GEL-COAT vacuum bonded fiberglass sidewalls, new Tour Edition exterior graphic decals.

COMFORT PACKAGE UPGRADE

15,000 BTU air conditioner with quick cool down draft diverter, trickle solar charger, Hepa filter and digital wall mount dual control thermostat, Fantastic 12V powered roof vent in bedroom includes rain sensor, central vacuum and attachments, ceiling fan.

All items that appear in **BOLD FONT** are **OPTIONAL** that are included on all production runs for this model.