

Titanium

GLENDALER V

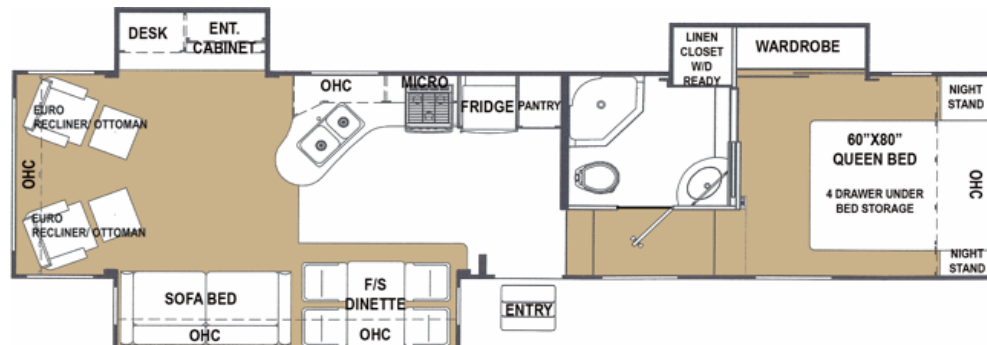
“NEW” PEARL

3338TS

FIFTH WHEEL

2008 MODEL YEAR

All specifications subject to change without notice or obligation 02/04/2008



| OVERALL LENGTH | LENGTH-PIN TO BUMPER | G.V.W.R | DRY PIN /EIGHT | DRY WEIGHT | OVERALL HEIGHT | MAIN BODY WIDTH |
|----------------|----------------------|-------------|----------------|-------------|----------------|-----------------|
| 38'-11" | 33'-10" | 13,876 LBS. | 1,980 LBS. | 10,700 LBS. | 12'-8" | 96" |

CONSTRUCTION

SIDEWALLS: Vacuum bonded smooth *High Gloss* fiberglass siding, 1 1/2" light weight aluminum perimeter sidewall framing, and 1 1/2" rigid foam insulation.

R9 Insulation value.

ROOF: Seamless rubber roof membrane is bonded to 3/8" decking. Full 4 1/2" tapered metal truss framing. Thick fiberglass batt insulation, **R14 Insulation value.**
FLOOR: 5/8" decking screwed and glued to 2"x4" main floor with fane joists 16" O.C. Darco polyethylene moisture resistant barrier between chassis and floor. Includes fiberglass batt insulation and flexfoil wrap combined **R19** Insulation.

CHASSIS: "I" beam steel frame construction, 3" heavy duty axle assemblies, Goodyear **ST235/780R16 E** radial tires, 12"x2" electric brakes, under slung spare tire and rim, snap release pins on powered front landing gear, power landing gear includes a safety shut off switch, Powered rear stabilizer jacks. *(Mandatory)*

SLIDEOUT SPECIFICATIONS: Low maintenance powerful rack and gear 12V direct drive motor system, flush floor design, manual system override.

INTERIOR CABINET DOORS: Raised panel & arch style beech cabinet doors. Metal roller glides on all drawers.

ENTRANCE DOOR: 30" wide radius corner combination entrance door with screen and deadbolt lock, easy fold-away 24" triple rise entry steps, fold-away assist handle for entry door, porch light.

ENTERTAINMENT

STEREO: DVD/CD Tuner surround sound system..

TV ANTENNA: 12V Power TV antenna with booster.

TV HOOKUP: Standard equipment.

TELEPHONE JACK: Standard equipment.

SATELLITE HOOKUP: Pre-wired for quick dish connection to the RV.

AWNING

A&E 8500 Plus 14' AWNING: Pewter/White.

Awning features Piston loaded auto dump for accumulated rainwater.

PLUMBING & ELECTRICAL

Sealand Traveler Lite foot pedal flush china toilet with hand spray, Neo angle shower, Single lever brushed brass faucet in kitchen with telescopic sprayer, Solid surface counter and deep double sinks, Brushed brass single lever tap in bathroom, water heater by-pass kit.
HOLDING TANKS: Holding tanks are enclosed, insulated and heated, with black tank flush system, Non-freeze drain tap on fresh water tank, sewage tank flush system.

HOLDING TANK CAPACITIES:

FRESH: 63 gallon **GREY:** 49 gallon **SEWAGE:** 49 gallon

ELECTRICAL CONVERTER: Progressive Dynamics

9200 series converter with built in Charge Wizard.

HOOKUP: 50 AMP.

STANDARD FEATURES

60"x80" Queen Bed, 8 cu ft refrigerator, Sofa Bed, Exterior rinse shower, Nev-R-Lube axles, Day/Night shades, Bath skylight above shower, Bullet style directional reading lamps, 3 burner range w/Piezo Ignition, 12V system quick disconnect switch, Spare tire and rim, Beech colored baseboards, Fold away entry assist handle, Roof ladder, Free standing Dinette, Rubberized Equa-flex suspension, 30" microwave, Aluminum rims, W/D Ready, 15,000 BTU ducted air conditioning, Whisper quiet 40,000BTU 2 stage furnace, 10 gal DSI GE water heater, Attic vents, Dual security lights, Euro recliners w/ottoman.

AVAILABLE OPTIONS

Electric fireplace, 30" Convection microwave, Slideout topper awning, 19" Bedroom LCD HD TV, 32" LCD HD TV main, Generator Ready (LP & Elec. Lines, switch, harness, Box & Venting), Rough in Generator lines (LP/Electrical lines Only), 13,500 BTU 2nd air conditioner, Cloth rocker recliners, Thermopane windows (pre-production), Curbside slideout awning, MorRyde pin box.

