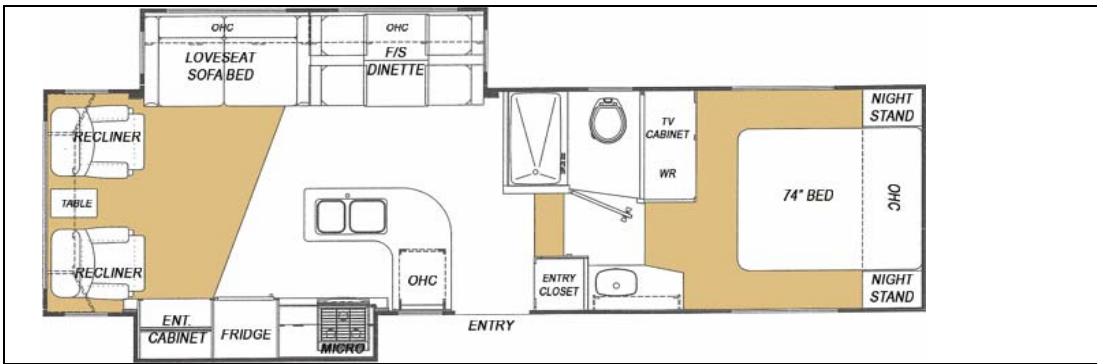


# Titanium

GLENDALERV

## 26E31DS FIFTH WHEEL 2008 MODEL YEAR

All specifications subject to change without obligation 12/04/2007



OVERALL LENGTH	LENGTH-PIN TO BUMPER	G.V.W.R	DRY PIN WEIGHT	DRY WEIGHT	OVERALL HEIGHT	MAIN BODY WIDTH
32'-4"	27'	11,600 lbs	1,760 lbs	9,108 lbs	12'6"	96"

### CONSTRUCTION

**SIDEWALLS:** Vacuum bonded smooth *High Gloss* fiberglass siding, 1 1/2" light weight aluminum perimeter sidewall framing, and 1 1/2" rigid foam insulation. **R9 Insulation value.**

**ROOF:** Seamless rubber roof membrane is bonded to 3/8" plywood decking. Full 4 1/2" tapered metal truss framing. Thick fiberglass batt insulation, **R14 Insulation value.**

**FLOOR:** Laminated beam floor structure includes 3" foam insulation panel bonded between plywood panels and perimeter framing, *Darco* polyethylene moisture barrier between chassis underbelly. **R16 Insulation value.**

**CHASSIS:** 11" combination Z channel/steel tube frame construction, 3" heavy duty axle assemblies, Goodyear ST235/80R16 E radial tires, venting wheel rims, Hydraulic disc brakes, under slung spare tire and rim, snap release pins on powered front landing gear, power landing gear includes a safety shut off switch, 2 stabilizer jacks, 72 degree adjustable pin box.

**SLIDEOUT SPECIFICATIONS:** Low maintenance powerful rack and gear 12V direct drive motor system, flush floor design, manual system override.

**INTERIOR CABINET DOORS:** Raised panel & arch style beech cabinet doors. Easy-Glide metal roller system on all drawers.

**ENTRANCE DOOR:** 30" wide radius corner combination entrance door with screen and deadbolt lock, easy fold-away 24" triple rise entry steps, fold-away assist handle on entry door, porch light.

### ENTERTAINMENT

**STEREO:** DVD/CD Tuner surround sound system.

**TV ANTENNA:** *Winegard* RV antenna with booster.

**TV HOOKUP:** Coax cable hookup in bedroom and living area.

**TELEPHONE JACK:** Standard equipment.

**SATELLITE HOOKUP:** Pre-wired for quick dish connection to the RV.

### AWNING

A&E 8500 Plus 18' AWNING: Pewter/White.

Awning features patented rugged steel roller tube and heavy duty torsion spring 8' extension.

### PLUMBING & ELECTRICAL

Sealand Traveler Lite foot pedal flush china toilet with hand spray, King shower, Single lever brushed brass faucet in kitchen with telescopic sprayer, All-in-one solid surface counter and deep double sinks, brushed brass single lever tap in bathroom, water heater by-pass kit, Water filtration system located under kitchen sink.

**HOLDING TANKS:** Holding tanks are enclosed, insulated and heated, with black tank flush system, Garden style non-freeze drain tap on fresh water tank, sewage tank flush system.

### HOLDING TANK CAPACITIES:

FRESH: 63 gallon GREY: 49 gallon SEWAGE: 49 gallon

**ELECTRICAL CONVERTER:** Progressive Dynamics 9200 series converter with built in Charge Wizard.

**HOOKUP:** 30 AMP.

### STANDARD FEATURES

60"x74" Queen Bed, Loveseat sleep and store inflatable system, Exterior rinse shower, 400 watt inverter, Solid surface kitchen countertop w/ deep molded sinks, Porcelain toilet w/hand sprayer, Day/Night shades, Bath skylight above shower, Beech colored base boards and crown molding, Bullet style directional reading lamps, 3 burner range w/Piezo Ignition, 12V system quick disconnect switch, Spare tire and rim, LED Flashlight, Fold away entry assist handle, Roof ladder, Rear stabilizer Jacks, Free standing Dinette, Recliners.

### OPTIONAL EQUIPMENT

Mor/Ryde Pin Box, Rear Electric stabilizer jacks, Electric fireplace, 6,000 lb axle upgrade PP-Only, 30" Convection microwave, Slideout topper awning, 10 cu ft Refrigerator PP-only, 20" Bedroom Flat screen TV, 26" HD LCD TV, Generator Ready (LP & Elec. Lines, Box & Venting), Rough in Generator lines(LP/Electrical lines Only)

### EXTERIOR PACKAGE UPGRADE

**(Mandatory)**

High Gloss Gel coat vacuum bonded sidewall, Dual exterior security lights, Hydraulic disc brakes, MOR/Ryde RE Suspension System, Nev-R Lube axles, Wide track easy fold triple entry steps, Thermopane windows, Aluminum Rims, Dual powered front landing gear, Premium exterior graphics package.

### MYSTIQUE EXTERIOR UPGRADE PACKAGE

**(PP-Only)**

"CIF" Full Body Color Infused Fiberglass, Color matched Awning and Hardware.

### INTERIOR COMFORT PACKAGE

**(Mandatory)**

Excalibur whisper quiet 2 stage furnace, 15,000 BTU air conditioner w/trickle charge solar panel, hepa filter and cool down draft air diverter, Digital wall mount dual control thermostat, 12V remote controlled powered roof vent, 30" microwave, Video distribution center, Central vacuum system, 9 cu ft refrigerator, Atwood XT DSI G/E 16 gallon output water heater, Ceiling paddle fan, Fluorescent lighting, Oak laminate flooring in kitchen area.

[www.glendalerv.com](http://www.glendalerv.com)